

RBWM



Presentation to Learning Disability Partnership Board
Tuesday 16th Jan 2024

wayne.garrett@rbwm.gov.uk
07583112568

www.rbwm.gov.uk



Royal Borough
of Windsor &
Maidenhead

RBWM

www.rbwm.gov.uk



Royal Borough
of Windsor &
Maidenhead

Housing Assistance & Disabled Facilities Grants Policy 2024

- Summary of changes -

Wayne Garrett – DFG Lead

wayne.garrett@rbwm.gov.uk

07583112568

RBWM

AGENDA

10 Minute Presentation – Summary of changes to proposed Housing Assistance & Disabled Facilities Grants Policy

- SPEAKER BACKGROUND

wayne.garrett@rbwm.gov.uk

07583112568

RBWM

AGENDA

5 Minute Presentation – Summary of changes to proposed Housing Assistance & Disabled Facilities Grants Policy

- SPEAKER BACKGROUND
- RBWM THE LAST 13 YEARS

wayne.garrett@rbwm.gov.uk

07583112568

RBWM

AGENDA

5 Minute Presentation – Summary of changes to proposed Housing Assistance & Disabled Facilities Grants Policy

- SPEAKER BACKGROUND
- RBWM THE LAST 13 YEARS
- THE NEED FOR CHANGE

wayne.garrett@rbwm.gov.uk
07583112568

RBWM

AGENDA

5 Minute Presentation – Summary of changes to proposed Housing Assistance & Disabled Facilities Grants Policy

- SPEAKER BACKGROUND
- RBWM THE LAST 13 YEARS
- THE NEED FOR CHANGE
- THE CURRENT CHALLENGES

wayne.garrett@rbwm.gov.uk

07583112568

RBWM

AGENDA

5 Minute Presentation – Summary of changes to proposed Housing Assistance & Disabled Facilities Grants Policy

- SPEAKER BACKGROUND
- RBWM THE LAST 13 YEARS
- THE NEED FOR CHANGE
- THE CURRENT CHALLENGES
- OVERVIEW OF THE NEW POLICY – WHATS BEEN REMOVED AND WHATS NEW

wayne.garrett@rbwm.gov.uk

07583112568

RBWM

AGENDA

5 Minute Presentation – Summary of changes to proposed Housing Assistance & Disabled Facilities Grants Policy

- SPEAKER BACKGROUND
- RBWM THE LAST 13 YEARS
- THE NEED FOR CHANGE
- THE CURRENT CHALLENGES
- OVERVIEW OF THE NEW POLICY – WHATS BEEN REMOVED AND WHATS NEW
- FUTURE TWEAKS

wayne.garrett@rbwm.gov.uk

07583112568

RBWM

AGENDA

5 Minute Presentation – Summary of changes to proposed Housing Assistance & Disabled Facilities Grants Policy

- SPEAKER BACKGROUND
- RBWM THE LAST 13 YEARS
- THE NEED FOR CHANGE
- THE CURRENT CHALLENGES
- OVERVIEW OF THE NEW POLICY – WHATS BEEN REMOVED AND WHATS NEW
- FUTURE TWEAKS
- Q & A s

wayne.garrett@rbwm.gov.uk

07583112568

RBWM

Speaker Background

Portsmouth City Council – Home Improvements Officer – 8 Years

Home Repairs Grants – Renovation Grants - Disabled Facilities Grants (DFG) – Loans

New Forest District Council – Planned Maintenance Surveyor – 5 Year

Introduced Frameworks – Fire Damaged Properties – Renewables – Window & Door 4yr contracts

RBWM – Temp Contractor Nov 21 – DFG Team Leader Appointment - Oct 2022

wayne.garrett@rbwm.gov.uk

07583112568

RBWM

RBWM The last 13 years... the Story far.....

Disabled Facilities Grants (DFGs) ... what are they ???

Mandatory requirement under the Housing Grants, Construction and Regeneration Act 1996

HGCRA 1996

Means tested grant aid which can provide adaptations to assist disabled people within their home

wayne.garrett@rbwm.gov.uk

07583112568

RBWM

RBWM The last 13 years... the Story far.....

Adaptions that can assist with access to the home and garden



wayne.garrett@rbwm.gov.uk
07583112568

RBWM

RBWM The last 13 years... the Story far.....

Adaptions that can assist with modifying bathrooms to provide level access showering



wayne.garrett@rbwm.gov.uk
07583112568

RBWM

RBWM The last 13 years... the Story far.....

Adaptions that can assist with modifying kitchens for wheelchair users

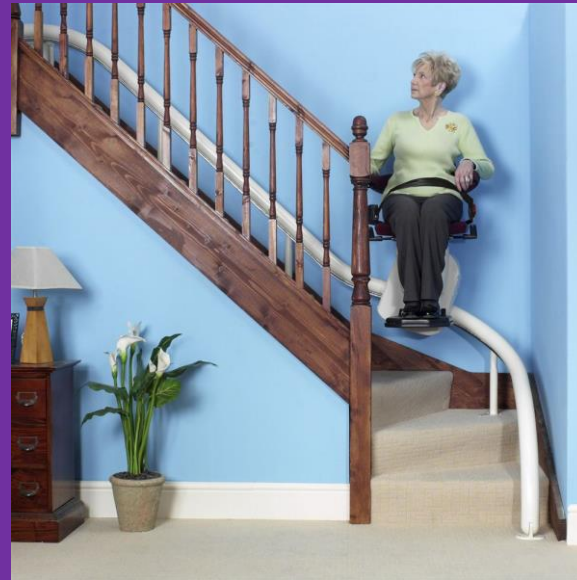


wayne.garrett@rbwm.gov.uk
07583112568

RBWM

RBWM The last 13 years... the Story far.....

Adaptions that can assist with the provision of stairlifts & through floor lifts

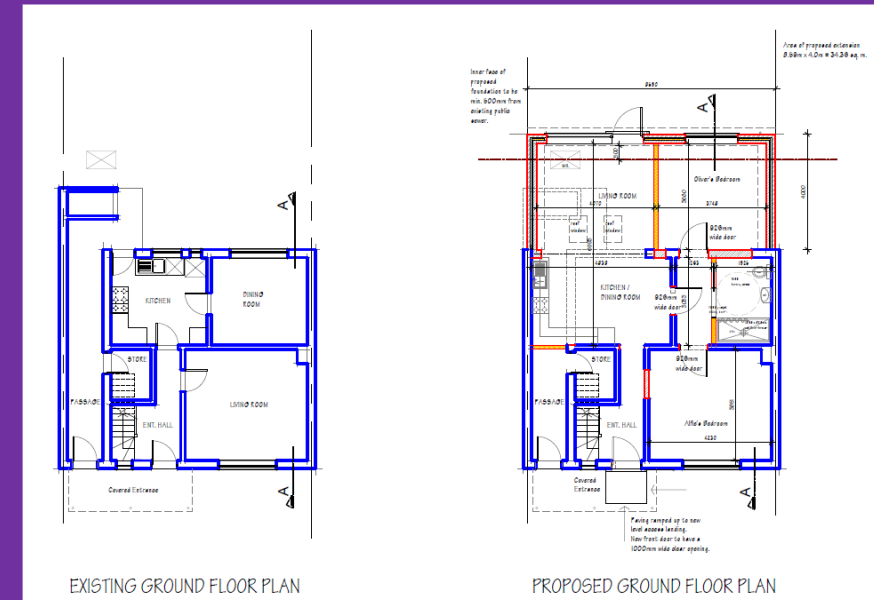
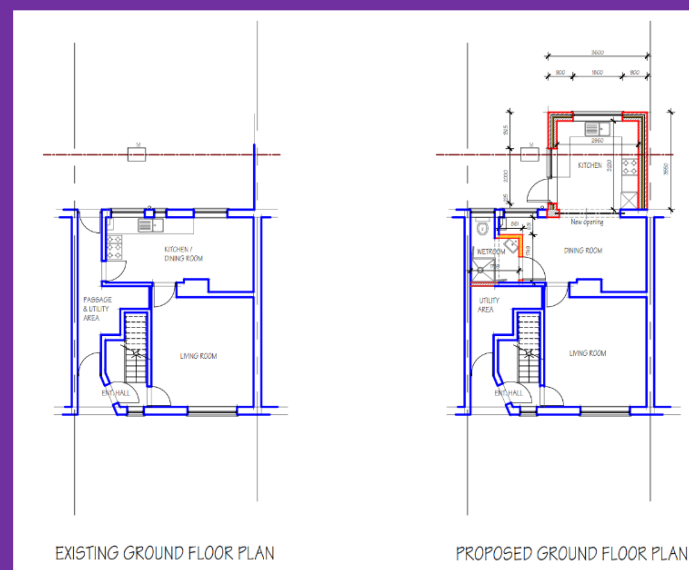
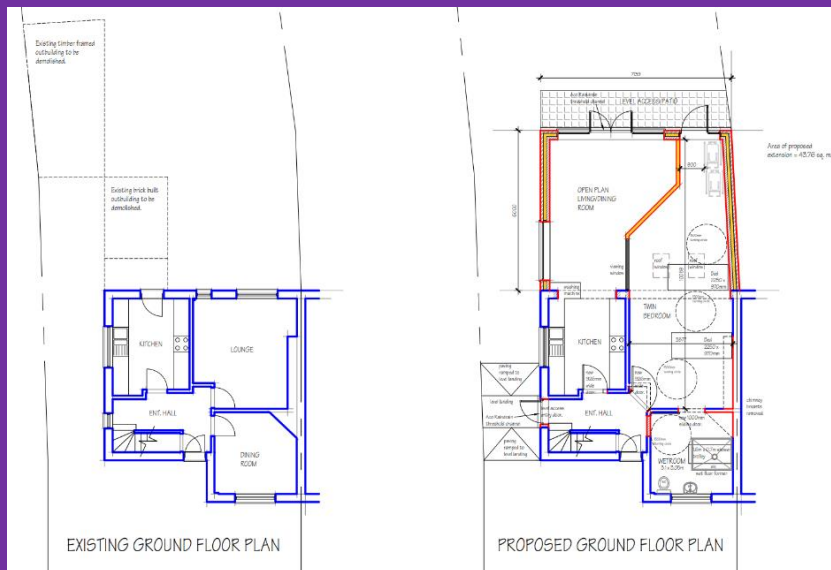


wayne.garrett@rbwm.gov.uk
07583112568

RBWM

RBWM The last 13 years... the Story far.....

Adaptions that can assist with the provision of new a ground floor extension



wayne.garrett@rbwm.gov.uk
07583112568

RBWM

The need for change

2008 – The Government announced an increased from £25,000 to £30,000

£30,000 into days money has been seriously devalued by the effects of inflation

The labour and material costs associated with Building Construction leaves £30,000 short of the funding required for large complex schemes of works such as extensions..



wayne.garrett@rbwm.gov.uk

07583112568

RBWM

The Current Challenges

Existing DFG Policy published 22nd March 2010 – Operates under primary legislation

No opportunity for RBWM to utilise “Discretionary Powers” to increase funding where appropriate

Legacy cases due to COVID & Staffing issues have impacted on the waiting times before engagement

wayne.garrett@rbwm.gov.uk

07583112568

RBWM

The New Policy – What's New ????

Palliative Care Assistance – (PCA)

Aimed at rapid assistance to clients with life limiting conditions.. Cancer – MND...

A non means tested assistance package to cover eligible works up to £5,000

Modula Ramps – Reconditioned Straight Stair Lifts – WC with Bio Bidet

Benefiting – Clients who need access in and out the home in connection to hospital discharge and regular follow up visitation – Provides client access to the up-stairs of the home.

wayne.garrett@rbwm.gov.uk

07583112568

RBWM

The New Policy – What's New ????

Housing Relocation Assistance – (HRA)

Aimed at clients who opt to move to new accommodation.

A non means tested assistance package - To support and fund moving costs for households where an adaptation is not feasible or economically viable.

Benefiting the client and RBWM by providing affordable solutions.

wayne.garrett@rbwm.gov.uk

07583112568

RBWM

The New Policy – What's New ????

Disabled Persons Equipment Replacement assistance – (DPER)

Aimed at clients who have aging, obsolete and defective end of life equipment

A means tested assistance package - To support equipment replacement costs.

Including - Straight stair lifts – Closomats

Benefiting clients who cannot afford the cost replacement.

wayne.garrett@rbwm.gov.uk

07583112568

RBWM

The New Policy – What's New ????

Disabled Facilities Assistance – DFA - Extensive works - Extensions

Aimed at clients who require a 'top-up' to mandatory DFG schemes where works exceed the maximum grant available (£30,000) or they are in genuine financial hardship.

A non-means tested assistance package - To support larger complex adaptations, such as extensions – Importantly each application must be supported by a panel of people who review each case across a number of criteria.

Benefiting clients who would otherwise fall fowl of the £30,000 limitation and cannot find alternative housing.

wayne.garrett@rbwm.gov.uk

07583112568

The New Policy – What's New ????

Disabled Facilities Assistance – DFA – Fund Client Contributions

Aimed at clients who require a 'top-up' to mandatory DFG schemes where works exceed the maximum grant available (£30,000) or they are in genuine financial hardship.

If a client has been means tested for a DFG and they have a contribution to make towards the cost of works, should their financial background demonstrate genuine hardship. For example, an elderly pensioner using the last of their savings etc.. A DFA could be utilised to pay their contribution.

Benefiting clients who would otherwise lose the last of their savings and fall fowl of the means test.

wayne.garrett@rbwm.gov.uk

07583112568

RBWM

The New Policy – What's New ????

Future Tweaks - Minor Adaptations – Raise the level of Assistance

Currently in privately owned or rented houses minor works up to a value of £1000, which have been assessed by an occupational therapist as being necessary and appropriate maybe carried out to make improvements within the home. This will cover installations such as grab rails, handrails, bath boards, special taps or door handles and temporary ramps.

Benefiting clients who would otherwise lose out on the cost of minor adaptations that would cost between £1000 - £XXXX possibly £1500.

wayne.garrett@rbwm.gov.uk

07583112568

RBWM

The New Housing Assistance & DFG Policy

New Draft out to public consultation which ends on 2nd February 2024

Expectation of high-volume feedback on proposal and likely to result in further refinements

Online Info -

<https://rbwmtogether.rbwm.gov.uk/disabled-facilities-grant-housing-assistance-policy-2024-public-consultation>

<https://www.rbwm.gov.uk/home/housing/homeowners-and-landlords/disabled-facility-grant-dfg>

wayne.garrett@rbwm.gov.uk

07583112568

RBWM

Questions

wayne.garrett@rbwm.gov.uk
07583112568

